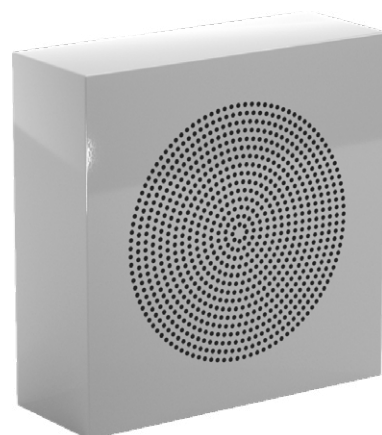


The MB 506(EN) Surface Mounted Wall Loudspeaker is designed for a wide range of applications. The unit is ideally installed in areas without a false ceiling such as in stairwells and rooms with concrete ceiling.

Utilising a 120 mm dynamic full range loudspeaker component, the MB 506(EN) provides excellent speech and music reproduction even under high ambient noise conditions. Its vented enclosure is designed to enhance the sound quality of the unit. The unit comes fitted with a fine metal mesh cover at the front baffle for improved aesthetics and better protection.

The MB 506(EN) comes with a multiple tapping line-matching transformer, suitable for 70 V or 100 V line distributed speaker system. The loudspeaker can be mounted horizontally or vertically without visible mounting screws and also tilted for closer sound projection. The enclosure is designed for permanent installation to prevent unauthorised removal of the unit.

- 120 mm dynamic full range loudspeaker component, providing clear undistorted sound quality.
- Horizontal or vertical mounting and a tamper-proof mounting design which completely eliminates front visible mounting screws.
- Built-in audio line matching transformer with multiple impedance, suitable for both 70 V and 100 V line distributed speaker system.
- A low-profiled enclosure design with a fine metal mesh cover makes the unit aesthetically pleasing.

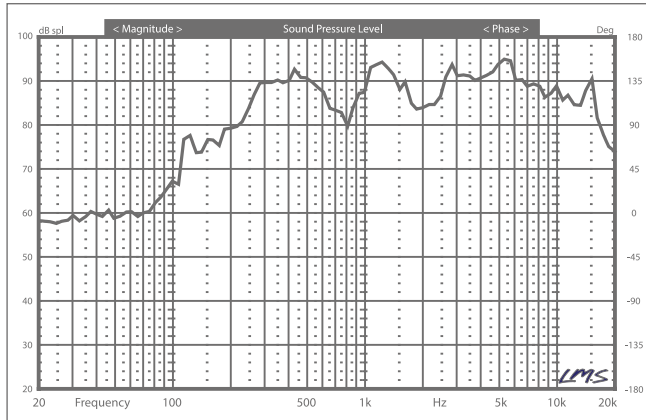


MB 506(EN)

Technical Specification

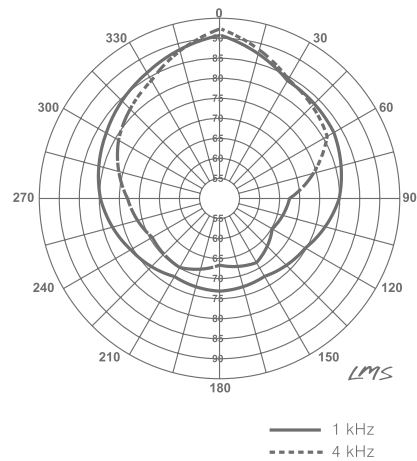
	MB 506(EN)
Rated Input	100V : 6 W (6 - 3 - 1.5 W)
Maximum Power	9 W
Rated Impedance	1.7 kΩ (1.7 - 3.3 - 6.7 kΩ)
Sensitivity (1W / rated at 1 m)	93 / 101 dB
Coverage Angle (1 kHz, -6 dB)	70 deg
Frequency Response	150 Hz ~ 20 kHz
Speaker Component	120 mm Dynamic Full Range Loudspeaker
Certified	EN 54-24:2008
Safety	Acc. to EN 60065
Material & Finish	Metal, White
Weight	3 kg

Frequency Response



*at 1W / 1m

SPL Polar Plot


 — 1 kHz
 - - - 4 kHz