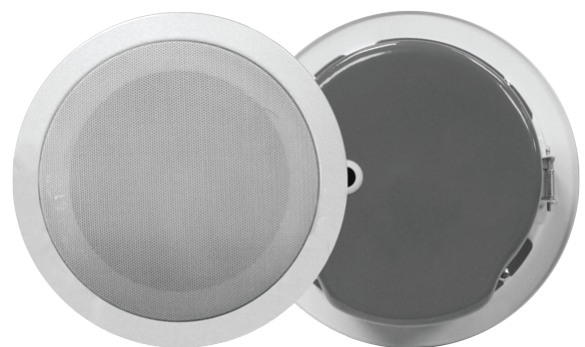


The CF561E Fire Rated Ceiling Loudspeaker is specially designed with a steel fire dome to prevent fire entering the cavity via the loudspeaker. The speaker is designed in compliance with EN 54-24 and BS 5839-1: 2002 standards. It is suitable for low ceiling applications such as shopping malls, supermarkets, offices and restaurants.

These ceiling loudspeakers are capable of reproducing voice announcements and background music with high clarity. The unit's impeccable sound quality and broadband frequency response are attributed to its 120 mm dual cone full range loudspeaker component to accurately reproduce the source signal with minimal sound discolouration.

Mounted on to a metal baffle and an aesthetically pleasing front metal mesh, the model comes with a multiple impedance line matching transformer, suitable for 70 V or 100 V distributed loudspeaker system with a maximum power handling of 6 W rated at 100 V.

- Readily installed with a fire dome, ceramic terminal block and thermal fuse in compliance with EN 54-24 and BS 5839-1: 2002 standards.
- White circular flush-mounted metal baffle with an aesthetically pleasing front metal mesh.
- 120mm dual cone full range loudspeaker component
- Flush mounted to the ceiling with its integrated spring mounting mechanism for ease of installation and improved aesthetics.
- Ready fitted line matching transformer with multiple power tapings of 3W and 6W.
- Wide coverage angle reduces the number of loudspeaker units required for evenly distributed sound coverage.

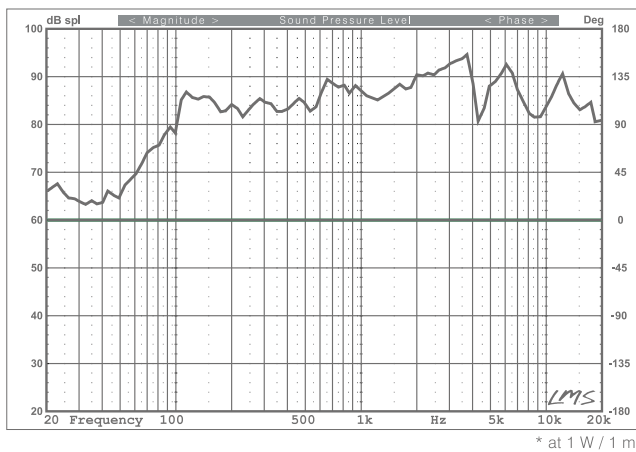


CF561E

## Technical Specification

	<b>CF 561E</b>
<b>Rated Input</b>	100 V : 6 W (6 – 3W) 70 V : 3 W (3 – 1.5W)
<b>Rated Impedance</b>	1.7 kΩ ( 1.7 - 3.3 kΩ )
<b>Maximum Power</b>	9 W
<b>Frequency Response</b>	90 Hz - 20 kHz
<b>Sensitivity 1W @ 1m</b>	91 / 99 dB
<b>Coverage Angle (1kHz, -6dB)</b>	180°
<b>Speaker Component</b>	120mm dual cone Full-range Loudspeaker
<b>Safety</b>	Acc. to EN 60065 • EN 54-24 • BS 5839-1: 2002
<b>Enclosure</b>	Spring Mounted
<b>Certified</b>	EN 54-24:2008
<b>Material &amp; Finish</b>	Frame: Treated Steel, white Grille: Treated Steel, white Enclosure: Treated Steel, red
<b>Dimensions</b>	Dia. 200 x 100 mm
<b>Weight</b>	1 kg

## Frequency Response



## SPL Polar Plot

