



AC 04S and AC 08S provides supervision of Duty amplifiers and provides automatic changeover of faulty amplifiers to a Standby amplifier.

The AC 04S is capable of monitoring 4 Duty amplifiers with automatic changeover to 1 standby amplifier while the AC 08S is capable of monitoring up to 8 Duty amplifiers with changeover to 1 standby amplifier.

The standby amplifier will back-up the duty amplifiers on a first come first serve basis. The unit also provides aural and visual indication to notify users of faulty amplifier.



AC 04S

Automatic Amplifier Changeover Unit

- Monitors 4 duty amplifiers channels and 1 standby amplifier channel.
- Performs 1 - to - 4 amplifier backup on first come first served basis.
- In the event of more than 1 amplifier failing, the AC 04 will ensure only 1 unit is changeover.
- Automatic amplifier channel connection sensing.
- Built - in buzzer for audio indication upon amplifier fault.
- General dry - contact upon amplifier failure for interfacing with external system.



AC 08S

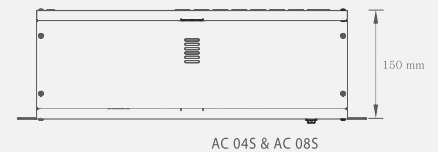
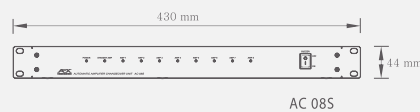
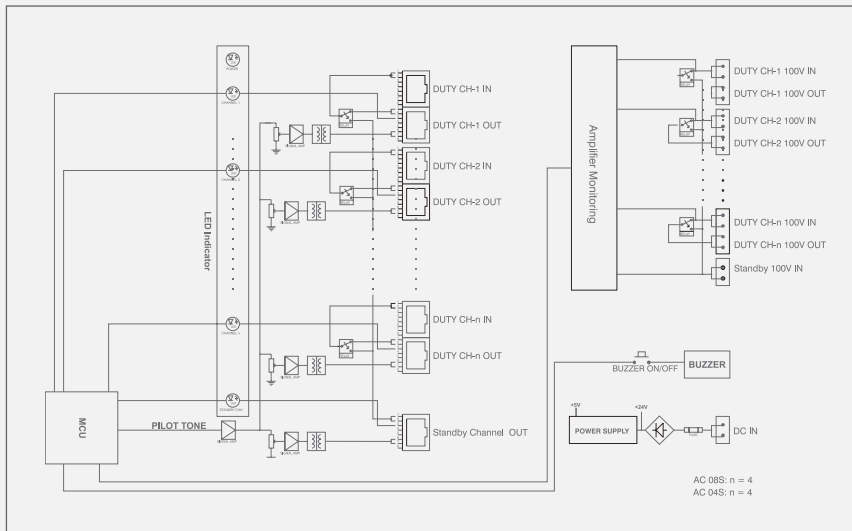
Automatic Amplifier Changeover Unit

- Monitors 8 duty amplifiers channels and 1 standby amplifier channel.
- Performs 1 - to - 8 amplifier backup on first come first served basis.
- In the event of more than 1 amplifier failing, the AC 08 will ensure only 1 unit is changeover.
- Automatic amplifier channel connection sensing.
- Built - in buzzer for audio indication upon amplifier fault.
- General dry - contact upon amplifier failure for interfacing with external system.

Technical Specification

	AC 04S	AC 08S
Connected Power Handling Per Zone	1200 W per channel	1200 W per channel
No. of channels per unit	4 Channels Duty, 1 Standby	8 Channels Duty, 1 Standby
Connectors		
Power I/O (100V Line)	2-Way Panel Feed Through Connector	2-Way Panel Feed Through Connector
I/O (Line Level) & Fault	4-Way Panel Feed Through Connector RJ 45 Socket	4-Way Panel Feed Through Connector RJ 45 Socket
Indicators	Power, 5 Bi-Colour indicators for 4 Duty & 1 Standby amplifier status	Power, 9 Bi-Colour indicators for 8 Duty & 1 Standby amplifier status
Power Requirements	24Vdc (Regulated), 0.28 A (Fuse:1A)	24Vdc (Regulated), 0.5 A (Fuse:1A)
Material & Finish	Mild Steel Casing, Epoxy Coated, Textured Black	Mild Steel Casing, Epoxy Coated, Textured Black
Dimensions	483 x 44 x 150 mm (W x H x D)	483 x 44 x 150 mm (W x H x D)
Weight	2.3 kg	2.4 kg

Block Diagram



Engineers' Specification

AC 04S

The AC 04S Automatic Amplifier Changeover Unit shall continuously monitor the operation of 4 duty power amplifiers and one standby power amplifier for fault. Upon detection of fault at the duty amplifier, the unit shall switchover the loudspeaker line of the faulty amplifier to the standby amplifier. The unit shall also switch the balanced line input of the faulty amplifier to the standby amplifier. A buzzer alarm will sound and a general dry contact will be provided upon fault. The alarm can be deactivated by a switch located at the front panel. The dimensions of the unit shall be 430 x 44 x 150 mm (W x H x D). The weight of the unit shall not exceed 2.1 kg.

AC 08S

The AC 08S Automatic Amplifier Changeover Unit shall continuously monitor the operation of 8 duty power amplifiers and one standby power amplifier for fault. Upon detection of fault at the duty amplifier, the unit shall switchover the loudspeaker line of the faulty amplifier to the standby amplifier. A buzzer alarm will sound and a general dry contact will be provided upon fault. The unit shall also switch the balanced line input of the faulty amplifier to the standby amplifier. The alarm can be deactivated by a switch located at the front panel. The dimensions of the unit shall be 430 x 44 x 150 mm (W x H x D). The weight of the unit shall not exceed 2.2 kg.