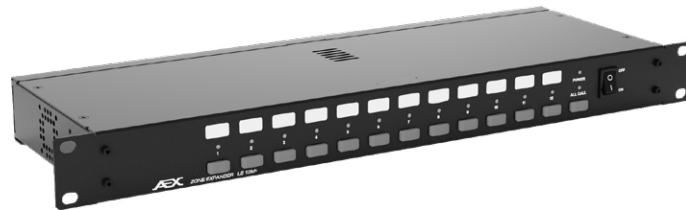




The LS 12A Speaker Line Selector allows for splitting and control of sub-zones within a PA system. The unit provides users the flexibility to manage announcements and background music within all the zones in a project. For example, controlling which zones shall have background music and which zones are without background music. Utilizing an array of relays, the unit has 12 buttons on the facial for manual control of the 12 available speaker zones allowing the zones to be switched ON or OFF. The LS 12A also comes with an additional ALL CALL button which automatically selects all 12 zones on the unit for added convenience. Apart from the front facial manual selection buttons.



Technical Specification

	LS 12A
Connector	100V line : 2.5mm Plug-in screw type, Panel feedthrough terminal block
Switch Buttons	12 nos. push buttons for line selection 1 no. ALL CALL button
Indicators Type	Green LED indicator for each zone
Max. Current Handling	5A (500W) per zone
Power Requirement	24 Vdc Regulated, 0.25 A (Fuse : 1.0 A)
Material & Finish	Mild Steel; Epoxy Coated; Black
Dimensions	483 x 44 x 150 mm (W x H x D)
Weight	2 kg